

**RDA PARKING PLAZA AT
FAWARA CHOWK, RAJA
BAZAR, RAWALPINDI**

RDA Parking Plaza at Fawara Chowk

Actions Already Taken

- ❖ Traffic studies conducted during 1995 and three sites were identified.
 - ❖ Near Banne Chowk
 - ❖ Near Committee Chowk
 - ❖ Fawara Chowk (offer received in 1997 through Public Private Partnership)
- ❖ Bids invited but project could not be executed due to intervention of Local Minister/ Resentment.
- Now RDA is going to construct a parking Plaza at Fawara Chowk of 500 Car park space through its own funds
- Architectural designing has been prepared.
- Advertised in the newspapers for selection of structural engineering consultants.
- NESPAK has been selected as consultant and agreement has been signed for designing of structure.
- Total Cost = Rs. 900 Million Approx.

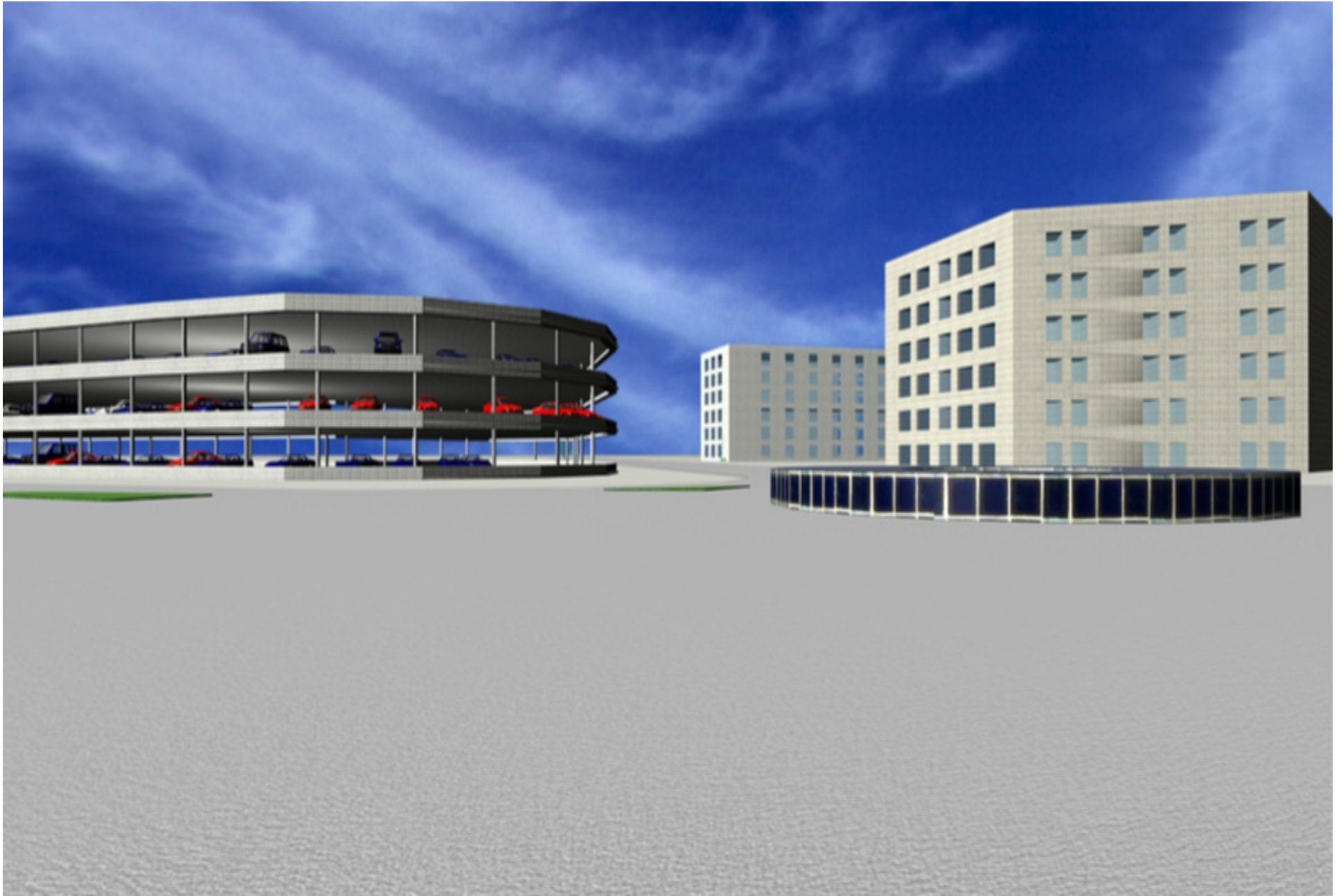
RDA Parking Plaza at Fawara Chowk

- RDA has planned the construction of RDA Parking Plaza to solve the ever increasing traffic jam and parking problems at the nerve centre of commercial activity i.e. Fawara Chowk which is converging point of SIX major roads. A demand of 500 vehicles per day has been worked out. Study reveals that provision of parking facility at this junction is essential to save the cultural and market character of Raja Bazar and its surroundings. The land is owned by RDA / TMA Old Building

Project Digest

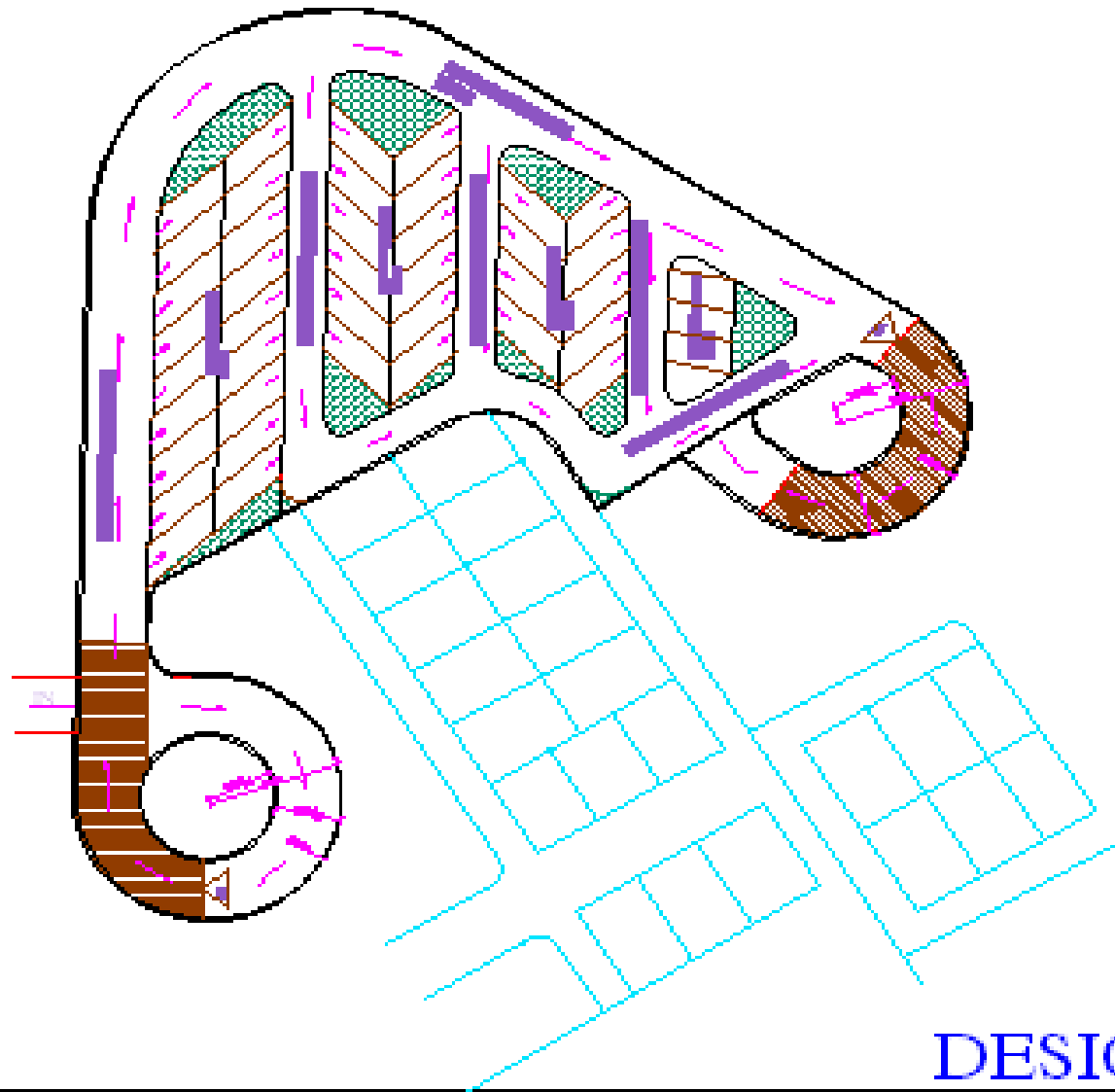
-Total area of site	= 2K - 7M – (163.35 Sft)
-No of Floors	= 2 Basements + 5 Floors
-Total Covered area	= 76230 Sft / 200 Cars Park
-Approx cost @ Rs. 1000/- per Sft.	= Rs. 80 Million approx.
-Basements will be used for public transport terminal	
-Operating Cost per month	= Rs. 1,12,320/-
-Net Income per month	= Rs. 4,49,280/-
-Period for recovery of Cost	= 15years

PARKING PLAZA FAWARA CHOWK









DESIGN = A

<p>CONCEPTUAL PLAN OF RDA PARKING PLAZA</p>	<p>1"=8' 01</p>				<p>METROPOLITAN PLANNING & TRAFFIC ENGINEERING DIRECTORATE</p>
---	---------------------	--	--	--	--

PARKING PLAZA FAWARA CHOWK



PARKING PLAZA AT FAWARA CHOWK, RAJA BAZAR RAWALPINDI.

